

# Software Installation for DigiBook/72 under Windows 95

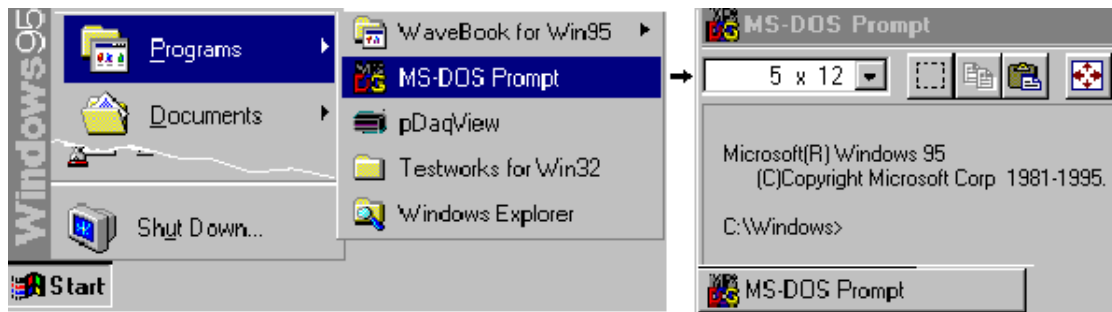
## Addendum to DigiBook/72 User's Manual

These instructions are based on an example to install C:\DIGIVIEW. The example also uses the A drive for the installation disk (p/n 243-0601). For your application, please substitute drive designations as applicable. The 3.5" installation disk for DigiBook/72 contains the following files:

- Digibook.exe** – self extracting installation
- Install.bat** – MS-DOS batch file for starting the installation process
- iotdaqpc.inf** – device information file for Windows 95
- readme.txt** – installation instructions for Windows 95

Installation steps are as follows: Note that screen images have been condensed.

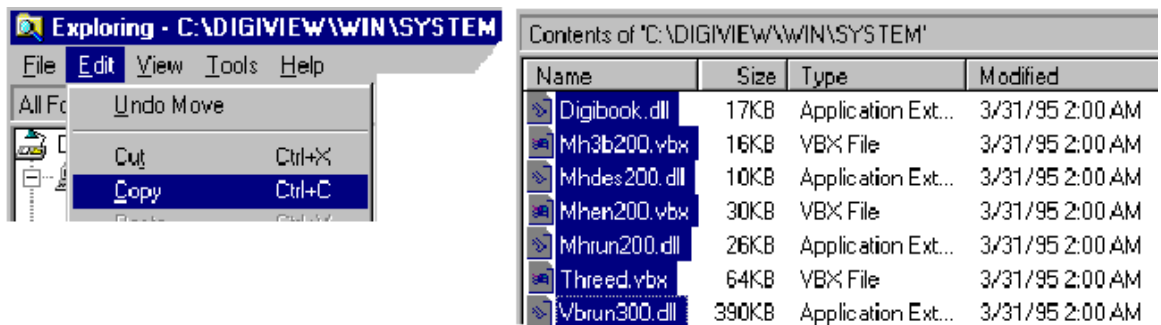
1. Install installation disk. In our example we use Drive A.
2. Activate the MS-DOS Prompt by clicking through the following selections from the Windows 95 Desktop: Start, Programs, MS-DOS Prompt (refer to following condensed screen image).



3. After the MS-DOS window opens, change the current drive designation to the drive containing the installation disk. We have been using Drive A in our example.
4. Specify the destination disk and path for the software libraries. Example: To install the software libraries to the C:\DIGIVIEW directory you would enter the following command in the MS-DOS Prompt:  
INSTALL C:\DIGIVIEW

Once this installation is launched, the installation script inflates the compressed files and creates the file structure in the specified directory. Note that complete installation of the software libraries and supporting files requires about 1 Megabyte of hard disk space.

5. Copy the system files from the system directory (created in the previous step) to the Windows/System directory. This is accomplished as follows:
  - a. Using Windows Explorer, go to the newly created System directory. In our example this is C:\DIGIVIEW\WIN\SYSTEM

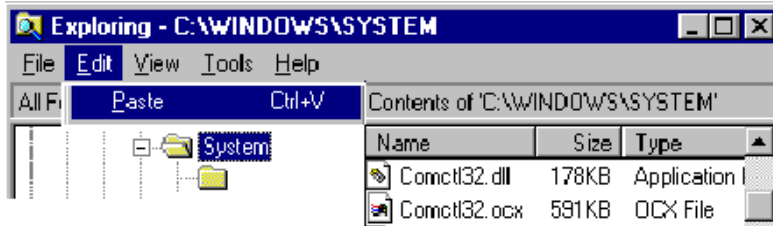


- b. Select the seven files (identified in the above figure).
- c. Click on the Edit menu and select Copy.

- d. **IMPORTANT - In this step you may encounter duplicate files. If a file already exists, do not replace it unless the replacement file has a more recent date.** Paste the files in the C:\Windows\System directory. You can also use the MS-DOS Prompt for this step.

MS-DOS Example: COPY C:\PROGRAM\WIN\SYSTEM\\*. \* C:\WINDOWS\SYSTEM

**Remember, do not replace a duplicate file with a less recent file.**



**p/n 243-0921**

Printed in United States of America